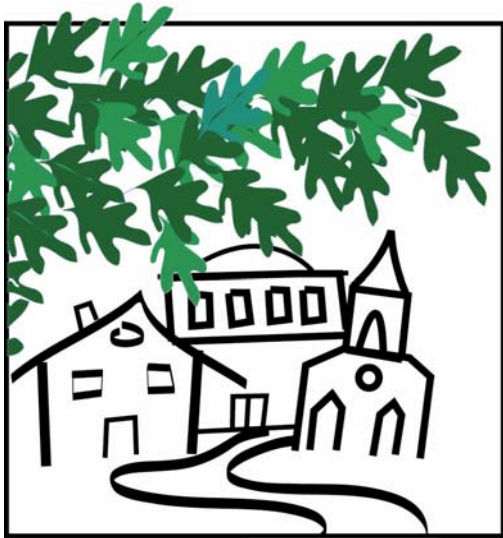


The Acorn

SOUTH CAROLINA URBAN &
COMMUNITY FORESTRY COUNCIL



2009 Annual Conference South Carolina's Urban Forest: Assessing the Benefits and Risks of Community Trees

It's that time of year again, time for our annual conference. The SCUCFC will be sponsoring *South Carolina's Urban Forest: Assessing the Benefits and Risks of Community Trees* on October 29 at the State Museum in Columbia. Whether you're a professional arborist, educator, planner, horticulturist or simply a tree lover, our conference will provide you with the knowledge and information you need to protect and maintain our state's trees.

This year's conference promises to offer an exciting array of discussions, ranging from talks on insect and diseases to legalities of urban forestry. Keynote speaker Dr. Kim Coder, professor at the University of Georgia, will conduct two presentations, one on tree biology and the other on hazardous trees. Other presentations will focus on watershed preservation and the Columbia greenway project. Columbia Mayor Robert Coble will join us for our awards luncheon when we will present the 2009 Golden Acorn and Heritage Tree awards, and the SCUCFC has an important announcement you won't want to miss. (For more information on this year's presentations, turn to page 4.)

What better place to hold our annual conference than Columbia, where Mayor Coble named 2009 the *Year of the Tree*. This dedication and commitment to our state's forests is evident in the City of Columbia's recent work beautifying the downtown district. At the end of our conference, participants will be invited on a tour of the Columbia Greenway Project (detailed on page 6). Participants will also have an opportunity to explore the many exhibits of the State Museum, including their permanent exhibit that showcases the history of forestry in our state.

We will once again hold a silent auction during the conference, with all proceeds benefitting the SCUCFC Scholars Fund. Money will be used to provide academic scholarships as well as fund community workshops throughout the state. For more information or to make a donation, please contact Sally Krebs at sallyk@hiltonheadislandsc.gov.

In order to maintain a healthy urban forest, one must assess the health and vitality of its trees. Mark your calendars and join us in Columbia for a day of education, awareness, and networking. For more information and to download a brochure, please visit our website at www.scurbanforestry.org.

SUMMER 2009

President's Letter	2
Forestry News	3
Conference Highlights	4
Young Tree Pruning	5
Columbia Greenway Project	6
Tree Sheet	7

President's Letter



“If it’s the psychic network, why do they have a phone number?” comedian Robin Williams once quipped. Williams’ seemingly inane comment has some merit. Maybe the psychics can telepathically talk with each other and a select few of the significantly more in-tuned but most of us need a venue or vehicle for our networking. There is none better than our annual conference on October 29 at the State Museum. Dionne Warwick won’t be there, but Dr. Kim Coder and a host of other experts will and they are certain to channel some vital tree information that we can put to use in our S.C. communities. There will also be 100 or so other people just like you with fertile brains ready for picking.

Another great meeting of the minds is our annual Carolina Arborist Workshop to be held in Columbia on September 17. Geared for the practicing arborist, this seminar will focus on the technical and safety aspects of arboriculture.

We don’t have to confine ourselves to just the more formal wave lengths of conferences and seminars however. Tagging along with colleagues or friends as they inspect a tree situation can be a great learning experience for all of you. Each person brings a unique set of experiences and knowledge. The wisdom of many can be greater than the wisdom of one.

It is important that we expand the consciousness of others. There is still a great deal of misinformation out there. Property owners and government agencies are making decisions that affect the community forest based upon emotionalism and half-truths. Public meetings and forums are bully pulpits for citing the science that should drive decisions. Urban forestry should be a blend of science and art and often well intentioned people focus more on the art than the science. Explaining the relationship can win converts to and advocates of good community forestry.

I am incredibly fortunate to work with a staff of urban foresters who regularly teach me something new (or, often, remind me of something I have forgotten). I, of course, network with them on a daily basis. I also get the opportunity to talk with police officers, fire fighters, sidewalk repair crews and engineers. I have found, through the years, that if I properly explain how a tree should be treated, they embrace that information and put it into practice.

Along with education and advocacy, **networking** is one of the ways we say that we will achieve our mission which is “To foster the stewardship of urban and community forests.” I think that I have learned more about urban forestry by listening to and viewing others than I have pouring over technical texts. Make no mistake, the texts are important sources of information but they don’t offer the opportunity to ask questions, offer alternatives or just watch how it should be done.

Feel the vibe. Make the call. The lines are open.
Danny

From the Executive Director

It is hard to believe that summer is almost over and it will soon be time for our annual conference. The agenda has been set and the food has been ordered, and registration brochures will be mailed off in a couple of weeks. As you read through this issue of *The Acorn*, you’ll get a sense of the presentations that are going to make this one of our best conferences ever. So be sure to join us at the State Museum on October 29 for an event you won’t want to miss!



I can’t forget the Carolina Arborist Workshop on September 17 at the Harbison Education Center in Columbia. Co-sponsored with the S.C. Forestry Commission and the ISA Southeastern Chapter, this program is full of technical presentations that are perfect for the practicing arborist.

As you know, our members receive a special rate to our programs as a way to thank you for your ongoing support. And speaking of members, be on the look-out for some information pertaining to your membership. You’ll still receive all the great benefits associated with being a member (and even a few new surprises), but beginning in January, our membership will be based on a calendar year. Details will be mailed out soon.

See y’all in Columbia,
Karen

SCUCFC Board of Directors

President—Danny Burbage, City of Charleston

Vice-President—Mike Russell,
Natural Directions, LLC

Secretary—Tim Gillette, City of Tega Cay

Treasurer—Clark Beavans, City of Rock Hill

Advisor—Liz Gilland, S.C. Forestry Commission

Timothy Edwards, S.C. Dept. of Transportation

Tom Knowles, University of South Carolina

Luther Marchant, Schneider Tree Care

Robert Longe, Bartlett Tree Experts

Jimmy Painter, Painter's Landscaping, Inc.

Danny Jones, City of Rock Hill

Carroll Williamson, City of Columbia

Louis Ehinger, SCE&G

Sarah Robinson, PalmettoPride

Ex-Officio

Don Ham, The Laurus Group

Eddie Bernard, The Town of Mt. Pleasant

Dr. George Sawyer, retired

Karen Hauck, Executive Director

The Acorn is a quarterly newsletter produced by the SCUCFC. We welcome your articles, news items, and photographs that may be of interest to our readers. Items may be sent to SCUCFC, PO Box 1679, Ladson, S.C. 29456 or scucfc@gmail.com.

Funds for this project were provided by the Urban and Community Forestry Grant Assistance Program administered through the S.C. Forestry Commission and funded by the USDA Forest Service.

The US Dept. of Agriculture prohibits discrimination in all its programs and activities on the basis of race, color, national origin, gender, religion, age, disability, political beliefs, sexual orientation, and marital or family status (not all prohibited bases apply to all programs). Persons with disabilities who require alternative means for communication of program information (Braille, large print, audiotape, etc.) should contact USDA's TARGET Center at 202-720-2600 (voice and TDD). To file a complaint of discrimination, write USDA, Director, Office of Civil Rights, Room 326-A, Whitten Building, 14th and Independence Ave., SW, Washington DC 20250-9410 or call 202-720-5964 (voice and TDD). USDA is an equal opportunity provider and employer.

S.C. Forestry Commission

2009 Grant Recipients

By Gloria Freeman, SCFC

The South Carolina Forestry Commission is pleased to announce that the 2009 Urban & Community Forestry Financial Assistance Grant Program has awarded 19 grants totaling approximately \$140,000 in grant monies. Of those, eight are municipalities, two are counties, seven are non-profit organizations, and two are educational institutions. We would like to congratulate the 2009 award recipients:

Beaufort County / Charleston Orphan House / Charleston Trees / City of Camden / City of Charleston / City of Fountain Inn / City of Greenville / City of Rock Hill / City of Sumter / Clemson University Extension-Berkeley County / Community Foundation of the Lowcountry / Lake City Community Foundation / Oconee County / S.C. Landscape & Turfgrass Association / S.C. Urban & Community Forestry Council / Town of McClellanville / Town of Mt. Pleasant / Trees Greenville / USC-Facilities Management

As usual, this year's projects range from basic street tree planting to public tree inventories and management plans to establish community forestry positions. This is the only source (federal or state) available to local governments in providing assistance for public tree management. As rural forests provide many products so do community forests. They include, but are not limited to, economic development enhancement, energy conservation, storm water abatement, and heat island reduction where we work, live and play.

America's Historic Tree Register

American Forests is accepting nominations for its new program, America's Historic Tree Register. The register is a place for people to share their love of trees with one another by nominating a tree that has historical or personal significance. Whether a tree that provided shade to a politician during a public gathering or one that you climbed when you were young, all trees are significant and deserve a place on the tree register.

Trees included on the tree registry fall into one of five categories: historic trees, famous people, places, age and uniqueness. Those trees that do not qualify for one of the above mentioned categories will be listed as a Personal Tree. These trees, while not historically or culturally significant, deserve recognition as a tree that has personal meaning to the nominator.

For more information or to nominate a tree, please visit American Forests at www.americanforests.org.

Is there a tree that has a special place in your heart? One that you used to play under as a child or perhaps where you exchanged vows with your spouse? If so, we'd love to hear them. Please send us your stories at scucfc@gmail.com.

Whatcha Talking About?

Annual Conference Speakers and Presentations

The Life & Times of Community Trees (Dr. Kim Coder, University of Georgia): Growing up a tree in many communities is a daunting and damaging problem. Making communities tree friendly involves understanding how trees make a living. Dead and dying trees are a sign of tree-illiteracy and neglect. This talk will concentrate on tree-affirming means of keeping trees alive through understanding what they need to survive.

Stormy Weather and Trees: Appreciating Tree Risk Values Under Storm Loads (Dr. Kim Coder): Storms can cloud great days while tree storm damage can cloud community horizons for years. One catastrophic event can change everything! Understanding the extreme forces storms apply to trees is the first step in managing community risks. A second component of risk management is appreciating tree failure components under our storm requiem.

Watershed Preservation in Sumter County (Charlie Holmes, Sumter City-County Planning Commission, and Quentin Epps, Mulkey Engineers & Consultants): Come hear about a watershed preservation plan from an urban forester's point of view. Maps play an important role in both the presentation and the project's success.

S.C. Tree City USA Recognition (Liz Gilland, SCFC): Forty-one towns, cities and military bases across South Carolina know the importance of a community tree care program and proudly display Tree City USA signs and flags throughout their communities. This equates to approximately 1/4 of the state's population living, working and playing in a Tree City.

What's Bugging Trees? The News on Aliens, Invasives and Repeat Offenders (Laurie Reid, SCFC): Come hear how to identify and control some common insects, pests and diseases affecting trees in South Carolina and learn about exotic species that are threatening our state's trees.

How to Think Like A Lawyer: Legal Perspectives on Community Forestry (Kristie Ellenburg, Ellenburg Associates, Inc.): Does the law dictate how landscapers and arborists perform their work? Learn how to protect yourself now so that legal liabilities don't cause problems in the future.

Columbia Greenway Project (Karen Kustafik, City of Columbia): Learn more about the City of Columbia's efforts to restore green space in a downtown business district. A detailed description of Karen's presentation can be found on page 6.

Help Us Go GREEN!!

In an effort to be more "green," the South Carolina Urban & Community Forestry Council is now offering *The Acorn* electronically. If you are interested in receiving an electronic version of our quarterly newsletter, please send us an e-mail at scufc@gmail.com and simply put "Electronic Acorn" in the subject line. We'll take care of the rest.

Your Logo

**Are you interested in being an
ACORN PARTNER?**

If you or your company would like to sponsor *The Acorn* or would like further information, please contact Karen Hauck at scufc@gmail.com.

Young Tree Pruning

By Carroll Williamson, City of Columbia

I was speaking with an experienced municipal arborist one day and asked him if his city had a young tree pruning program. He replied, "Of course" and then he elaborated with this analogy. "Would you wait until your child was a teenager to teach him right from wrong? Of course not, and I apply the same thinking to young tree pruning." With that unequivocal guidance in hand, I proceeded to develop a tree pruning program for the city of Columbia.

First, I turned to Ed Gilman's *An Illustrated Guide to Pruning*, and as I anticipated, he provided clear instructions on young tree pruning as well as how to develop a long-term pruning cycle (appendix 6). This all sounded great, but now I had to come up with a plan for the city of Columbia. Fortunately, the reforestation technician before me had kept a record of all the trees planted during the 2004-2005 planting season. Armed with that information, I set out to mold the young trees on this list to grow into outstanding, healthy contributors to the city and to their community for many decades to come.

Gradually, I broke my pruning procedure down to four steps so I could give other employees clear, simple instructions on the proper techniques. These instructions only apply to shade tree species (oaks, tulip poplar, maples, elms) because they are the trees that have the potential to cause the worst damage as they reach a mature size (60 to 120 feet). Therefore, it is critical that you correctly identify the tree species prior to pruning the tree. (Understory species like cherries and dogwoods do not fall into this category. Please refer to Gilman's book for guidance on pruning these species.)

First, I observe the tree I am about to prune in order to determine what lower branches to remove. Gilman recommends keeping two-thirds of the tree's height as canopy, so I start by removing all lower branches that fall in the lower one-third. If the remaining branches would still obstruct a pedestrian on a sidewalk, I prune those as well.

Second, and most importantly, I select the central leader and subordinate or remove all competing leaders. The decision to subordinate or remove depends on the size of the competing leaders. The larger the stem, the more likely it is that I will subordinate it during this pruning. Then, in a couple of years, when the central leader has become apically dominant, I will return to the tree to remove the remaining subordinate stem.

Third, I follow Gilman's recommendation (page 188) to select the lateral branches that are growing close together and remove some of them in order to create a system of spiraled, scaffold branches well-spaced apart. Any time multiple branches are growing close together on the trunk at this young age, at least one should be removed because of the stress on that part of the trunk will increase as the branches' diameters increase in size.

Finally, of the remaining lower branches in the upper two-thirds of the tree, I reduce by approximately 1-2 feet as many as I can reach from the ground with the pole pruner, pruning back to a lateral branch. This technique slows the growth of lower branches that will eventually be removed in the next twenty years. This step accomplishes two things. First, it prevents lower branches from competing with the central leader. Second, when the branches are eventually removed later in the pruning cycle, the cuts will not be so large that the tree will have to expend a lot of its energy compartmentalizing the pruning wound. (Gilman, page 192)

After two years of young tree pruning, the city of Columbia has a pruning cycle established and about 1,000 trees pruned like I described above. I spent the first year honing my own technique, but since then have trained another employee whom I can send out on his own to mold these young trees properly as well.

Spending approximately 15 minutes pruning each of these young trees now will save thousands of dollars in tree maintenance for the city in the long run. Though it may be hard to justify to your employer shifting your limited labor resources to a new endeavor, an argument in terms of long-term cost savings should help convince your boss to make this important investment in your city's trees.

To learn more about proper tree pruning techniques, be sure to attend the Carolina Arborist Workshop September 17.

Columbia Greenway Project

By Karen Kustafik,
Park Ranger Coordinator, City of Columbia

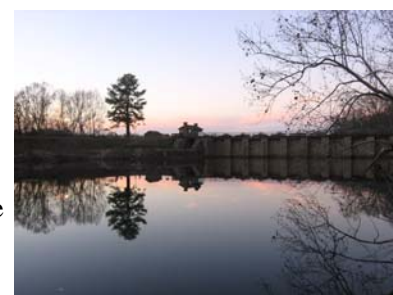


Greek philosopher Heraclites wrote that you can never stand in the same river twice. Change is a universal constant, and that is powerfully evident to those of us who work by the river daily. Even a casual observer driving over the city's river bridges can see evidence that our river corridors are playing a key role in Columbia's renaissance.

The City of Columbia Department of Parks and Recreation manages Riverfront and Granby Parks, part of the larger Three Rivers Greenway. In her upcoming conference presentation, Park Ranger Coordinator Karen Kustafik will visit the history of land use in our river corridor and the resulting shift in values and perceptions of those areas.

For pre-Colonial cultures, the Congaree, Saluda and Broad Rivers were avenues of travel and commerce, brimming with sustaining populations of shad and sturgeon. When colonists followed river pathways upstream from the coast, they stopped at the fall line, where rocky shoals impeded upstream navigation. Saxe Gotha, Granby, and later Columbia grew into centers of commerce. By the 1820s, Robert Mills and Abraham Blanding constructed canals to enable navigation around our city's rock strewn confluence. The remains of those canals are tucked into the parks we manage today, a testimony to a time when as many as 20 barges a day journeyed between Columbia and Charleston. Karen's presentation will highlight present day benefits derived from our river corridors, and discuss some of the challenges we face as greenway managers.

We encourage you to join Karen after her program for a short walking tour. Wear your boots for a stroll past the historic Columbia Hydro onto a riverside trail under the impressive canopy of our riparian forest. It is outdoors that the story tells itself; one simply has to make time to listen.



Carolina Arborist Workshop

September 17, 2009

Harbison Environmental Education Center

Columbia, S.C.

The annual Carolina Arborist Workshop, held by the SCUCFC, ISA Southern Chapter, and the S.C. Forestry Commission, will be held on September 17 at the Harbison Environmental Education Center in Columbia. Sponsored by Mead's Tree Service, Inc., the workshop is perfect for the practicing arborist. Presentations will focus on tree pruning, tree risk assessment, insects and disease, chipper safety and maintenance, rigging systems and their limitations, and bucket truck maintenance and safe operation. ISA and SAF credits will be available. For more information, please contact the ISA Southern Chapter at (888) 339-8733.

2009 Annual Conference

Silent Auction

Help us raise money for the SCUCFC Scholars Fund! A silent auction will be held during the annual conference on October 29. All proceeds will be used to fund academic scholarships and community workshops.

To donate an item for the silent auction, please contact Sally Krebs at (843) 341-4690 or by e-mail at sallyk@hiltonheadisland.sc.gov.

Items with an environmental theme are appreciated, and all donations are tax deductible.

Choosing the Right Tree for the Right Place

South Carolina Urban and Community Forestry Council

Yaupon Holly

Latin name: <i>Ilex vomitoria</i>	Texture: fine to medium
Common name: Yaupon Holly	Growth rate: medium
Zones: 7-10	Light: full shade to full sun;
Height & Width: 15'-20' ht x 15'-20' w	Moisture: Moist soils; tolerant of drought and occasionally wet soils
Type: Evergreen	Soil: Alkaline to acidic; widely adaptable*
Habit: Naturally a multi-stem upright small tree with a vase shaped crown	Origin: SE Virginia to central Florida and W to Texas

Features: Yaupon has thin gray-colored bark and small 1.5" long oval shaped dark green leaves. It is a dioecious plant, meaning male and female flowers are on separate trees, so if small BB sized red berries are desired then both male and female plants should be selected. Some named varieties produce orange or yellow berries and others offer dwarf or weeping forms. Its trunk can easily be pruned of lower branches to provide a tree form specimen with a canopy that will increase in density with increased sun exposure. The tree has a tendency to form suckers at the trunk base, which may need to be controlled. Its small leaves and dense form make it suitable for shearing and topiary.

Siting: It is usually found in the coastal maritime forest, but can also found in the piedmont areas. Yaupon is widely tolerant of most situations like soil texture, salt exposure, moisture, and solar conditions, which makes it a versatile urban specimen that could be used as an alternative to crape myrtle.

Care: Yaupon is readily available in Carolina nurseries in a variety of sizes from shrub to tree with trees usually being multi-stem forms. Taller specimens are available for sale but harder to find. It should be planted so that the root flare is visible and slightly above the existing grade. Following planting and an application of a 3" thick layer of mulch, water the root ball daily with two gallons of water for the first two weeks, then reduce the frequency to every other day for the next two months, and then weekly until established. Mulch should not touch the trunk to avoid poor air circulation and potential rot and pest problems. If staking is necessary, use wide straps where in contact with the tree to avoid bark damage and potential girdling. Guying should be loose enough to allow some sway in the breeze. This will enable the tree to develop trunk taper and strength against future wind conditions. Guys and straps should be frequently monitored to ensure that the tree trunk is not girdled. Remove all guying and staking material after the first full growing season.

Pests: Typically none, but some sources list leaf minor as a minor pest.

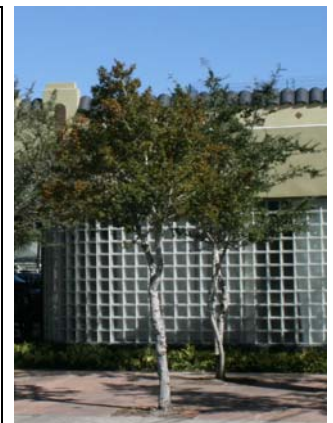


Contact the S.C. Urban & Community Forestry Council at www.scurbanforestry.org for membership and additional information.

*Soil ph is determined using a professional soil test. Contact your Clemson University County Extension service for assistance www.clemson.edu/extension/. Click on "local offices".

Tree selected from the *Urban Tree Species Guide: Choosing the Right Tree for the Right Place*.

Author and Photographer: Eddie Bernard, Town of Mt. Pleasant
Reviewer: Danny Burbage, City of Charleston





PO Box 1679
Ladson, SC 29456

MARK YOUR CALENDAR

- | | |
|---------------------------|--|
| September 17, 2009 | Carolina Arborist Workshop, Harbison State Forest's Environmental Education Center, Columbia, S.C. For more information, please visit www.scurbanforestry.org. |
| September 18, 2009 | ISA Arborist Certification Exam, Columbia, S.C. For more information, please visit www.isasouthern.org. |
| October 1, 2009 | SCNLA/SCLTA Joint Fall Field Day, Columbia, S.C. For more information, please visit www.scnla.com. |
| October 29, 2009 | SCUCFC Annual Conference, Columbia, S.C. For more information, please visit www.scurbanforestry.org. |
| December 4, 2009 | South Carolina Arbor Day |

Visit www.scurbanforestry.org for more information